



AL-AMAL SCHOOL

1401 Gardena Avenue NE, Fridley, MN 55432 www.al-amal.org (763) 571-8886 Fax (763) 571-1925

Operating Hours and Parking Lot Policy Guidelines

Please refer to the Student Parent Handbook for details for all policies through the Al-Amal School website: www.al-amal.org or get a copy from the Administration. The following are critical highlights of operating and parking lot policies. Al-Amal School, **in consultation with the Fridley Police Safety Office**, has reviewed the policies, and made changes for better community safety for drop-off and pick-ups of children and visitor parking.

Al-Amal School begins at 8:00 am (1st period) and goes until 3:00 PM. After school programs at Al-Amal School will be announced to all parents when available. Sign-up and registration for any after school program will need to be done before students will be allowed to stay after school.

Late Arrival

1. Students are considered late if they are not seated, and ready to begin class, at 8:10 AM. More than three tardiness during one week, students will be charged \$5 a week through FACTS.
2. The student's late arrival is documented by the homeroom teacher or the first period teacher.

Drop-Off

During drop-off, the school will use the X plan (See the attached details about the X Plan).

1. Drop-off for all students starts at 7:35 to 8:00 AM. All drop-off will be at the Al-Amal School main entrance. After 8:00 AM, the main school door will be locked, and you will need to be buzzed in. Breakfast served from 7:40 to 8:00 AM.
2. Parents will not be allowed in the building during drop-off and pick-up times. Parents can visit the school with an appointment; please call (763-571-8886) or email to schedule an appointment.

Pick-Up

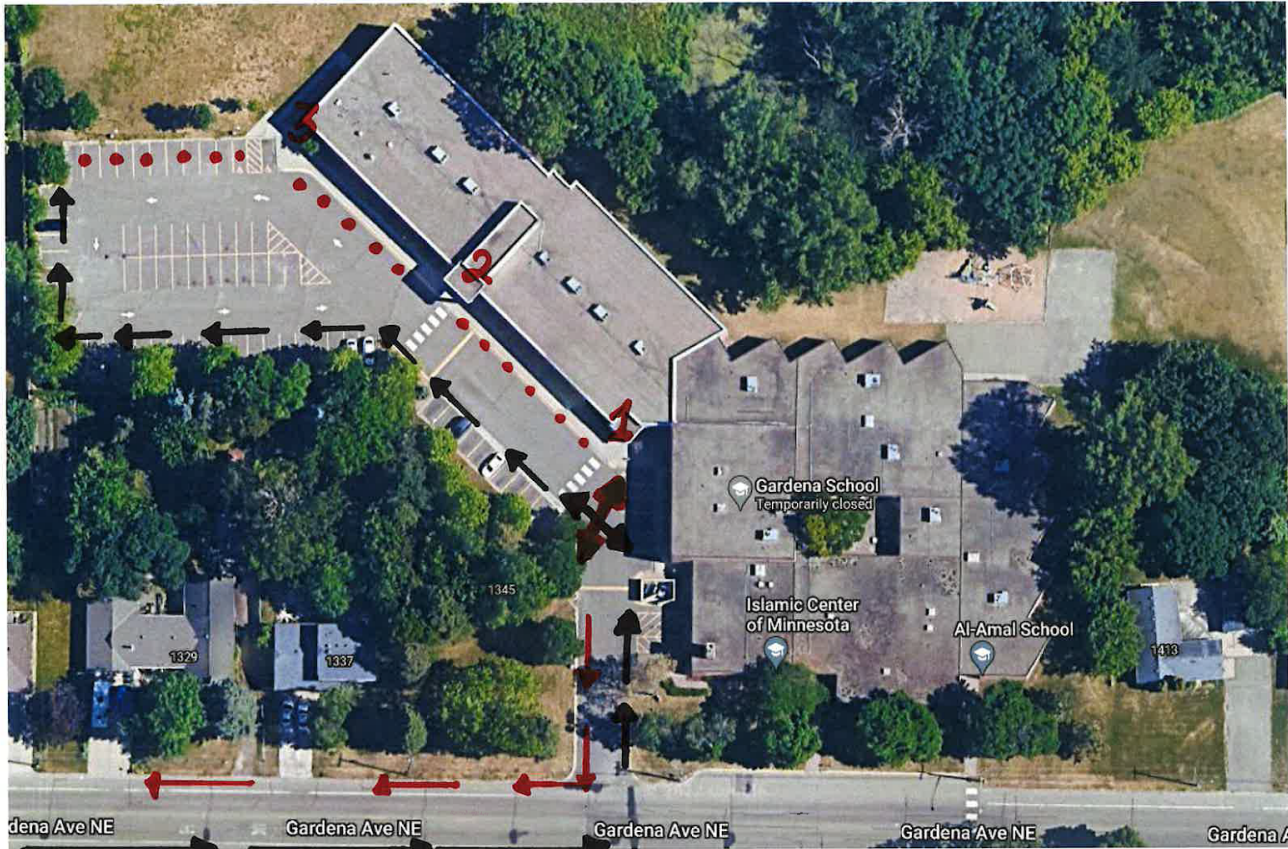
During pick-up, the school will use the X plan (See the attached details about the X Plan).

1. **Group 1**: All Preschool students will be dismissed **from 2:45 pm to 3:00 pm** at Gardena Ave (Door# 4). We request all parents in this group to take the Silver Lake exit instead of Central Avenue if they are coming from Hwy 35 via 694 to avoid doing a U-Turn and minimize the traffic on Gardena Ave.
2. **Group 2**: Elementary students ONLY will be dismissed **from 2:45 pm to 3:10 pm** through the main parking lot. If you have students both in elementary and middle/high school, you are not part of this group.
3. **Group 3**: Mixed (Elementary & Middle/High) students will be dismissed **from 3:15 pm to 3:35 pm** through the main parking lot.

Important reminders to ensure safety:

1. Follow directions for all parking lot signs and drive slowly (5 MPH); always watch for children in the parking lots. Be prepared and ready to stop quickly when needed.
2. Ensure picking up your student(s) during your allotted time according to your group only.
3. Use Porcare; if you have a problem with Procare, reach out to the office.
4. Encourage more parents to approach the school from the Silver Lake side. If parents usually come from Moore Lake an alternative is to go Rice Creek then turn right on Benjamin and then right again on Gardena. (It only adds a couple of minutes to the drive).
5. If you are coming from hwy 694, please consider taking the Silver Lake exit instead of Central Ave.

The X Plan:



The school uses the X plan which is going the opposite of the arrows directions during the pick up and drop off time (**In consultation with the Fridley Police Safety Office**) for multiple reasons:

1. Safety purpose (No crossing street or crossing through the parking lot).
2. Lining up, loading, and dropping off in our parking lot.
3. Better usage of the loading /dropping off area to minimize traffic congestion on Gardena Ave.
4. Using multiple doors for the procedure instead of one door.
5. No need to U-Turn.

The X Plan Starts:

1. The X Plan is implemented in the morning from **7:35 AM to 8:10 AM** and **2:35 PM to 3:35PM** in the afternoon.
2. During the day, please use the regular directions.
3. Here is the volunteer form ([HERE](#)) for parents who want to help in the implementation of the procedure. Please Sign up for the PickupDrop off Volunteering Hours.

Parking Lot and No Parking Zone Rules

1. No vehicle parking or idling is allowed in front of all school entrances including the pavement adjacent to the school from 8:00 am to 3:00 PM.
2. It is illegal to make a U-turn in front of the ICM (Islamic Center of Minnesota on Gardena Avenue) entrances. Fridley police will issue citations.
3. The pavement in front of the main school entrance is drop-off only in the mornings. During pick-up (3:00-3:30 PM), sitting inside your car and idling will be allowed.
4. Please obey the handicapped signs and do not park your vehicle in the two designated ICM Only spots. Follow directions for all parking lot signs and all white arrows, drive slowly (5 MPH), and always watch for children in the parking lots. Be prepared and ready to stop quickly when needed.
5. Follow all directions given by the school dismissal staff and security guard in the school parking lot.
6. Violators will be towed at the owner's expense for parking rule violations.

Visitors

1. Visitors must enter the school through the main school entrance by the parking lot when school is in session. Please proceed to the office and sign in and get a school visitor pass.
2. Visitors, including parents, are not authorized to roam or wait in the school building during school hours (8:00 AM – 3:00 PM) without appointments.
3. Parents, please **schedule meetings ahead of time** to talk to your child's teacher or administration.
4. Visitors must obey all safety, evacuation, and lockdown procedures when in the building.

updated 06/15/2023